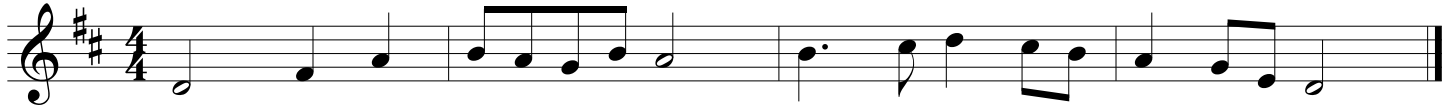


GMEA All State Chorus Sight Reading

9th-10th Grade Soprano

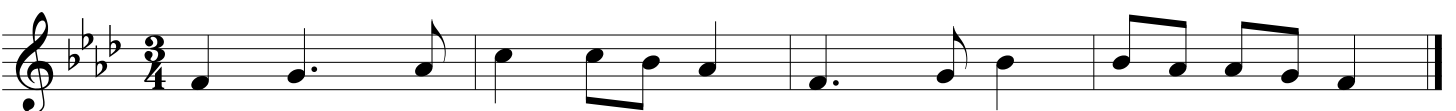
2001-02



2002-03



2003-04



GMEA All State Chorus Sight Reading

9th-10th Grade Soprano

2004-05



2005-06



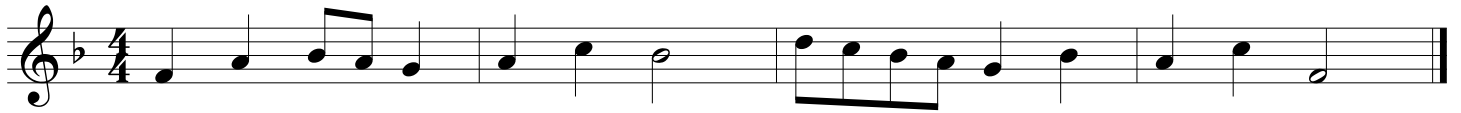
2006-07



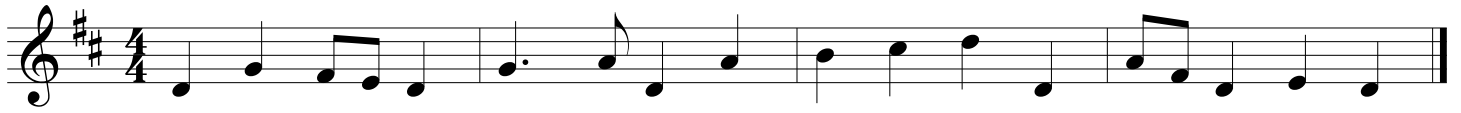
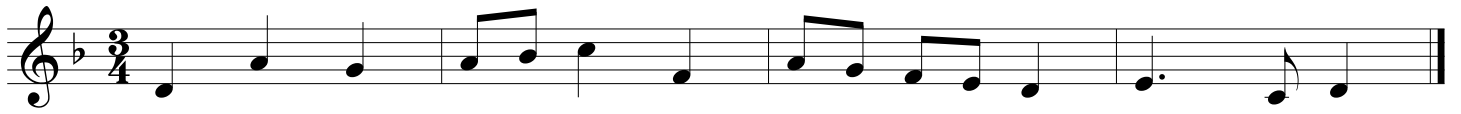
GMEA All State Chorus Sight Reading

9th-10th Grade Soprano

2007-08



2008-09



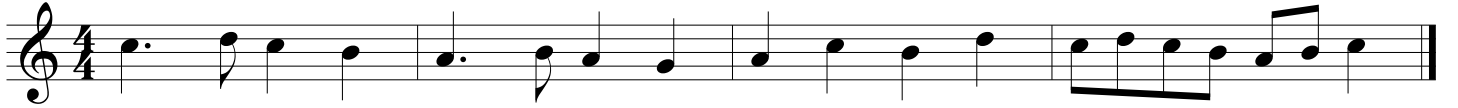
2009-10



GMEA All State Chorus Sight Reading

9th-10th Grade Soprano

2010-11



2011-12



2012-13



GMEA All State Chorus Sight Reading

9th-10th Grade Soprano

2013-14

The image displays three staves of musical notation for soprano voice, each in 4/4 time. The first staff is in G major (one sharp), the second in B-flat major (two flats), and the third in D major (two sharps). Each staff contains a single melodic line with various rhythmic values including quarter, eighth, and sixteenth notes, as well as rests. The notation is presented as a sight-reading exercise.