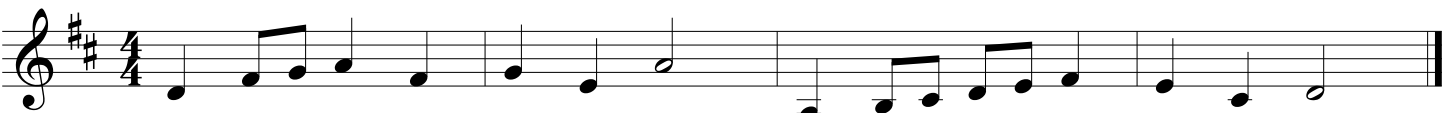


# GMEA All State Chorus Sight Reading

## 9th-10th Grade Alto

2001-02



2002-03



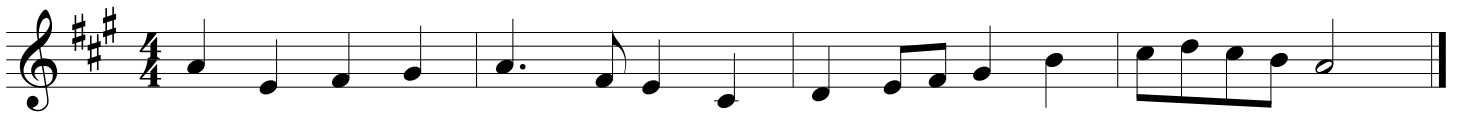
2003-04



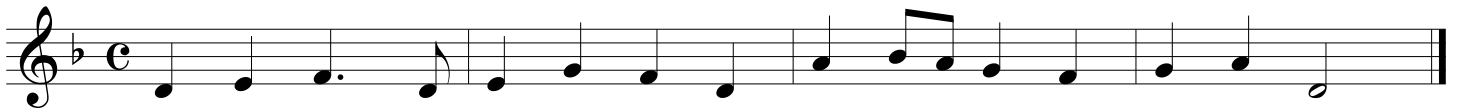
# GMEA All State Chorus Sight Reading

## 9th-10th Grade Alto

2004-05



2005-06



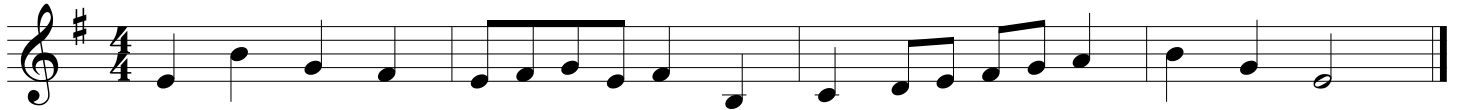
2006-07



# GMEA All State Chorus Sight Reading

## 9th-10th Grade Alto

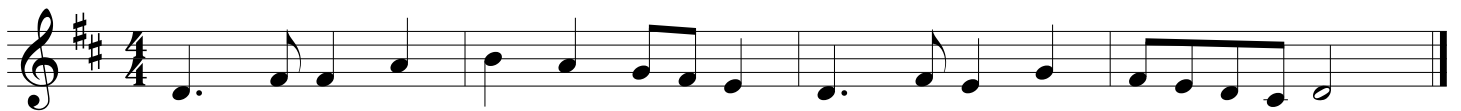
2007-08



2008-09



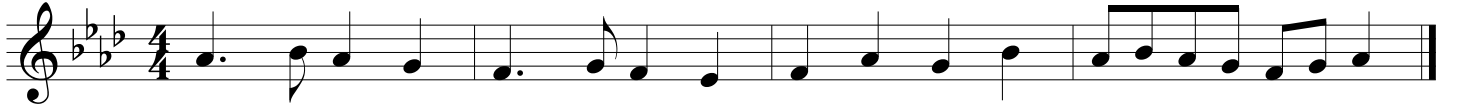
2009-10



# GMEA All State Chorus Sight Reading

## 9th-10th Grade Alto

2010-11



2011-12



2012-13



# GMEA All State Chorus Sight Reading

9th-10th Grade Alto

2013-14

The image displays three staves of musical notation for sight reading. Each staff begins with a treble clef and a 4/4 time signature. The first staff is in the key of D major (three sharps: F#, C#, G#). The second staff is in the key of B minor (two flats: Bb, Eb). The third staff is in the key of D major (one sharp: F#). The music consists of rhythmic patterns of eighth and quarter notes across four measures on each staff, ending with a double bar line.