

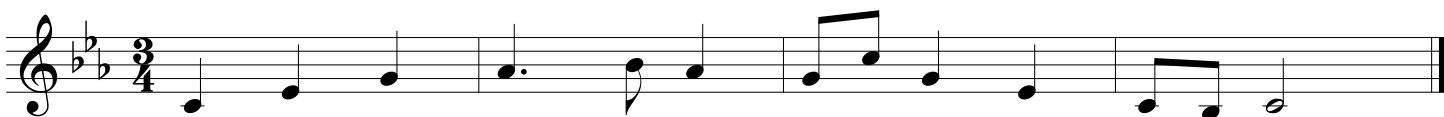
GMEA All State Chorus Sight Reading

11th-12th Grade Alto

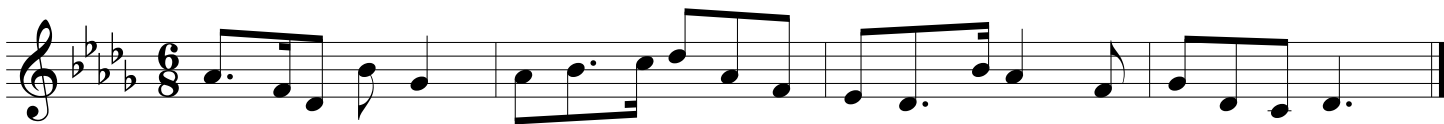
2001-02



2002-03



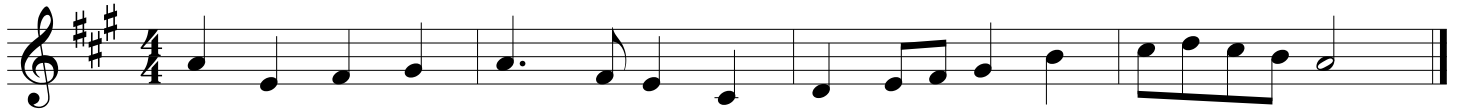
2003-04



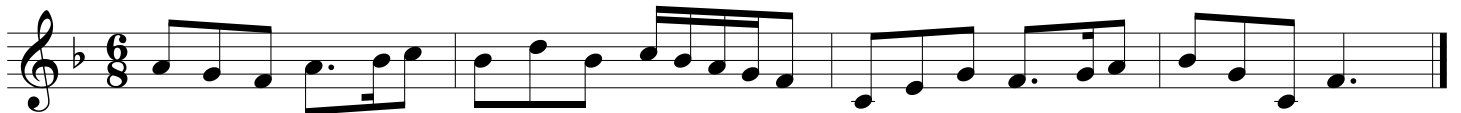
GMEA All State Chorus Sight Reading

11th-12th Grade Alto

2004-05



2005-06



2006-07



GMEA All State Chorus Sight Reading

11th-12th Grade Alto

2007-08



2008-09



2009-10



GMEA All State Chorus Sight Reading

11th-12th Grade Alto

2010-11

Three staves of musical notation for the 2010-11 piece. The first staff is in treble clef with a key signature of three sharps (F#, C#, G#) and a 4/4 time signature. The second staff is in treble clef with a key signature of two flats (Bb, Eb) and a 4/4 time signature. The third staff is in treble clef with a key signature of three sharps (F#, C#, G#) and a 6/8 time signature.

2011-12

Three staves of musical notation for the 2011-12 piece. The first staff is in treble clef with a key signature of one flat (Bb) and a 4/4 time signature. The second staff is in treble clef with a key signature of one flat (Bb) and a common time (C) signature. The third staff is in treble clef with a key signature of two sharps (F#, C#) and a 6/8 time signature.

2012-13

Three staves of musical notation for the 2012-13 piece. The first staff is in treble clef with a key signature of one flat (Bb) and a 3/4 time signature. The second staff is in treble clef with a key signature of one sharp (F#) and a common time (C) signature. The third staff is in treble clef with a key signature of two sharps (F#, C#) and a 6/8 time signature.

GMEA All State Chorus Sight Reading

11th-12th Grade Alto

2013-14

The image displays three staves of musical notation for sight reading. The first staff is in G major (one sharp) and 4/4 time, featuring a melody of eighth and quarter notes. The second staff is in B-flat major (two flats) and 4/4 time, also featuring a melody of eighth and quarter notes. The third staff is in G major (one sharp) and 6/8 time, featuring a melody of eighth and quarter notes. Each staff concludes with a double bar line.